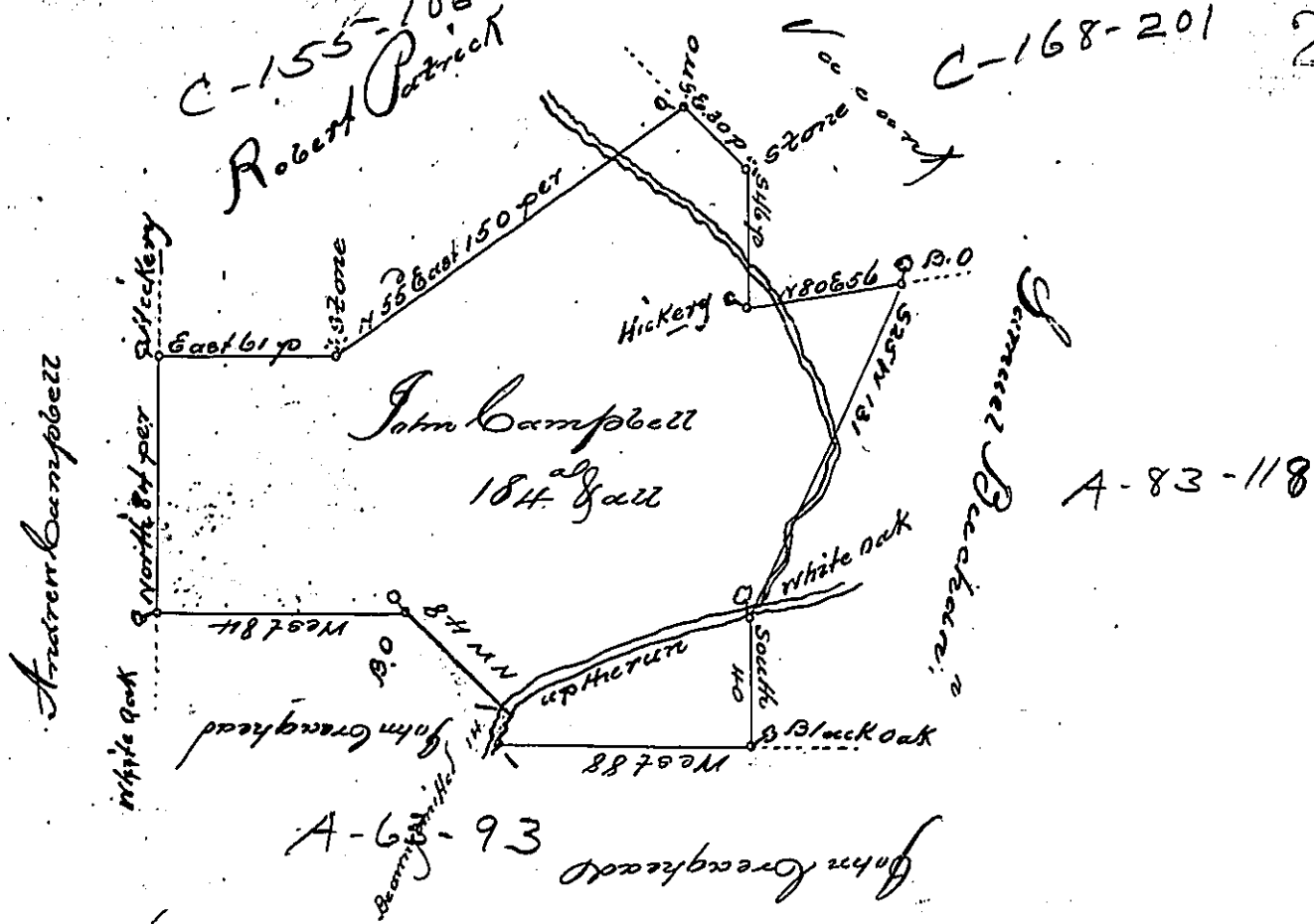


C-155-106
Robert Patrick

C-168-201

248



By Virtue of a Warrant from the Proprietor dated the 21st of March, 1736, The above described Tract of Land was surveyed unto John Campbell in the Township of Salisbury in the County of Lancaster, Beginning at a Hickery in Andrew Campbell's Line, Thence east by Robert Patrick 61 perches to a stone Thence North 55 degrees East by the same 150 perches to a White Oak, Thence South East by Vacant Land 30 perches to a Stone, Thence South by the same 46 perches to a Hickery, Thence North 80 degrees East by the same 56 perches to a Black Oak, Thence South 25 degrees West by Samuel Buchanan 131 perches to a White Oak, Thence South by the same 40 perches to a Black Oak, Thence West by John Creaghead 88 perches to a run then up the same 14 perches, Thence North West by the said Creaghead 48 perches to a Black Oak, Thence West by the same 84 perches to a White Oak, Thence North by the said Andrew Campbell 84 perches to the place of beginning. Containing One Hundred and eighty four acres, beside the usual allowance of Six ft. and

15th Mo. 1739

p. Sam Lightfoot

Assigned to Andrew Bell.

By a Warrant granted the 9th of June 1741, To make return for Andrew Bell.

IN TESTIMONY that the above is a copy of the original remaining on file in the Department of Internal Affairs of Pennsylvania, made conformably to an Act of Assembly approved the 16th day of February, 1833, I have hereunto set my Hand and caused the Seal of said Department to be affixed at Harrisburg, this third day of December, 1901

James W. Latta
Secretary of Internal Affairs.